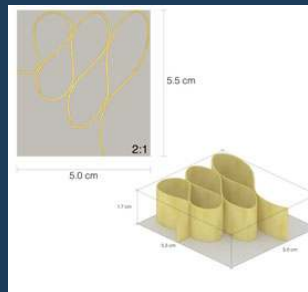
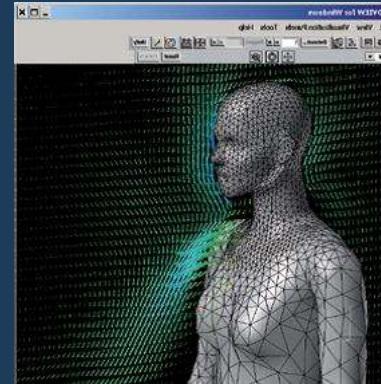


Department of Civil Engineering



Keywords structures, geotechnics, hydraulics, indoor environment, design, environment, food-related research



AALBORG UNIVERSITY

The European Commission support for the production of this publication does not constitute an endorsement of the contents which reflects the views only of the authors, and the Commission cannot be held responsible for any use which may be made of the information contained therein.

AAU's location

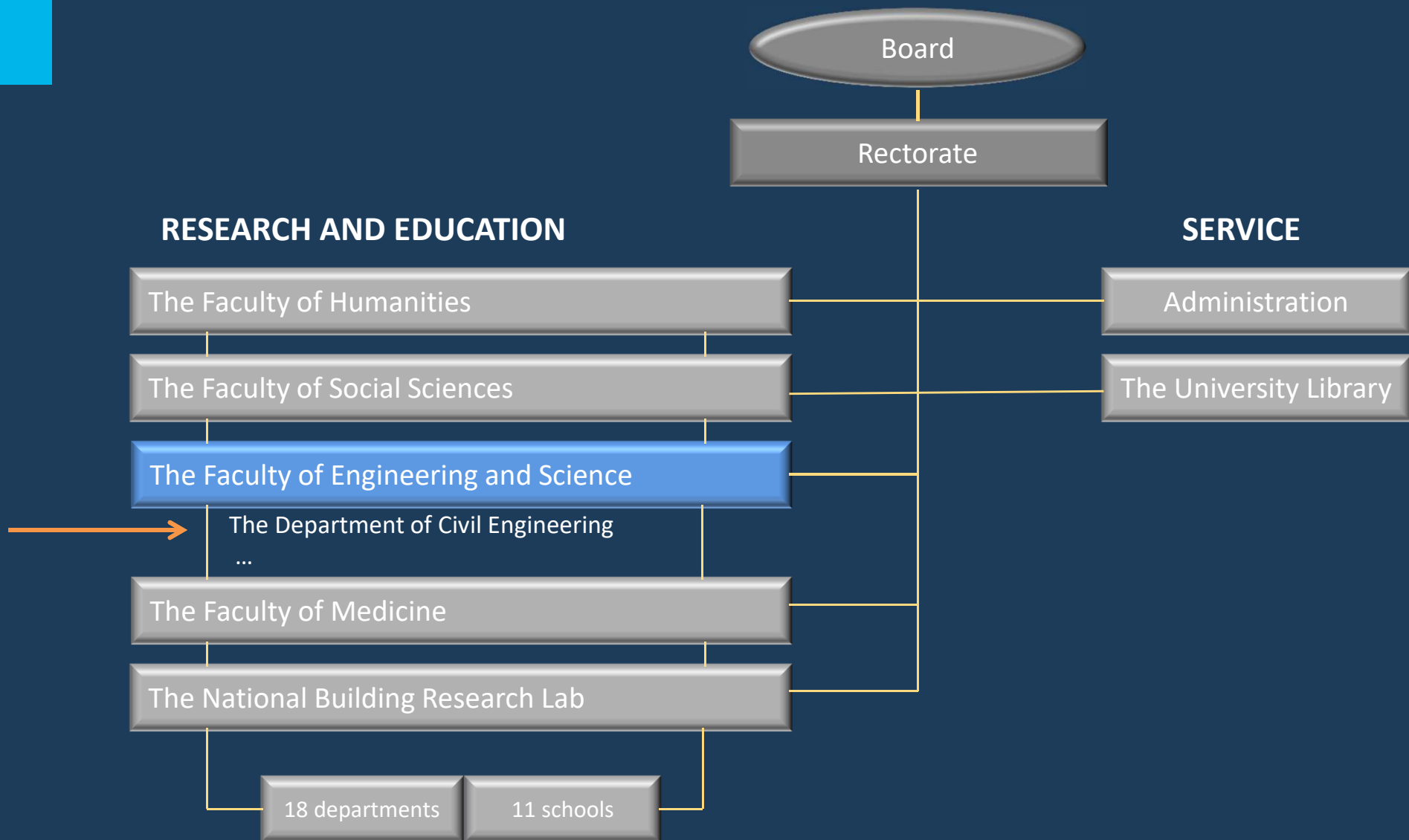
Aalborg Campus

Esbjerg Campus

AAU Cph



Organisation - AAU





Division of Structures, Materials and Geotechnics

Research groups:

- **Innovative Structures**
- **Offshore Foundations**
- **RISK** *Danish Centre for Risk and Safety Management. Co-operation with SDU (University of Southern Denmark).*



Head of division Lars Damkilde

“The subject area of the division includes both theoretical and mechanical modelling as well as experimental characterisation of structures and structural materials.”



Keywords offshore structures, windmills, bridges, stability of structures, fracture mechanics

Division of Water & Soil

Research groups:

- Structural Dynamics, Reliability and Risk Analysis
- Marine Structures
- Water, Environment and Landscape



Head of division Morten Lauge Pedersen

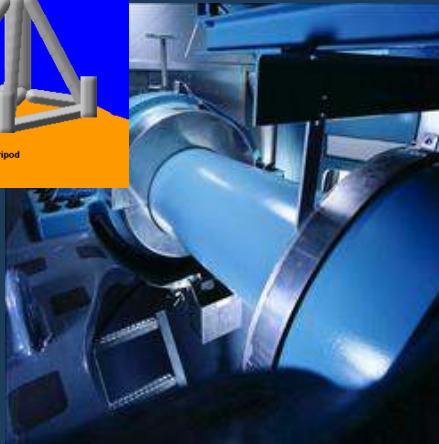
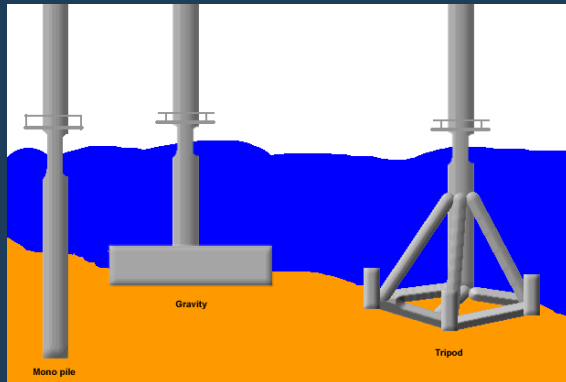
"Our research focuses on several areas such as uncertainty modelling, reliability assessment and risk analysis of buildings, bridges, offshore structures, marine structures, windmills and wave energy plants."



Keywords hydraulics, physical geography, wave energy, rain- and wastewater outflow, windmills

Chosen research projects

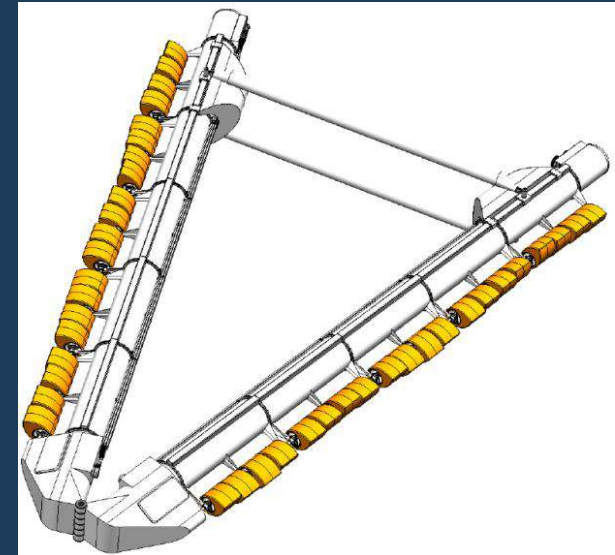
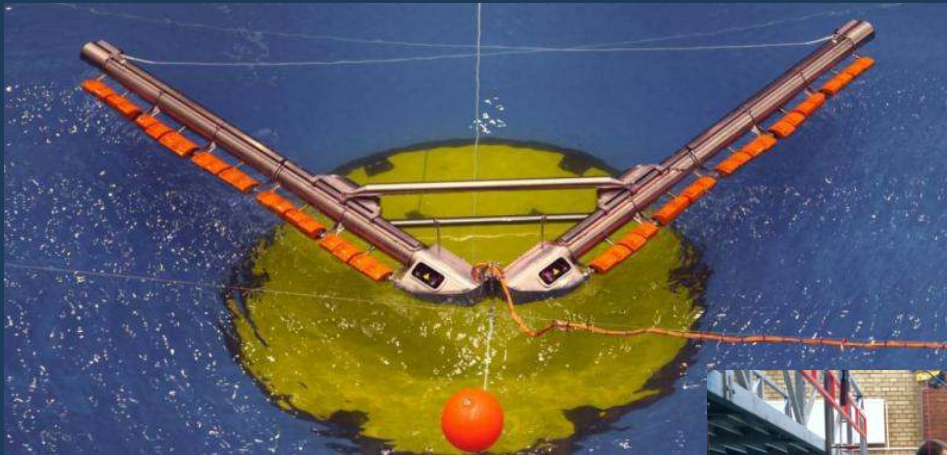
Reliability-based Design of Wind Turbine Foundations – Computational Modelling



Keywords load, foundations, reliability, load capacity, geotechnics

Chosen research projects

WEPTOS Wave Energy Converter



Keywords wave energy, floating construction, angle-shaped structure, renewable energy

Educational programmes

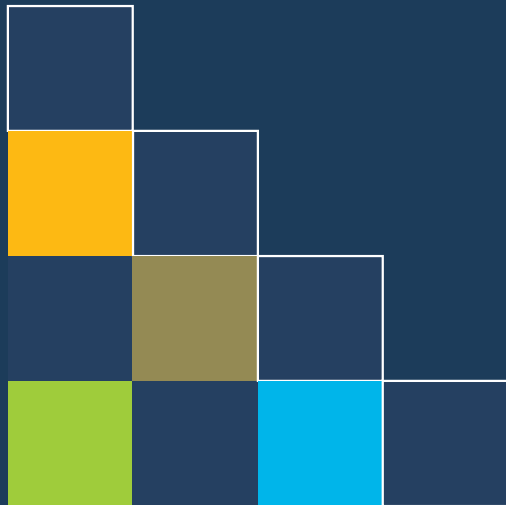
- open to international students

Master of Science in Engineering, M.Sc.

- Structural and Civil Engineering (both Aalborg and Esbjerg)
- Management in the Building Industry
- Indoor Environmental and Energy Engineering
- Water and Environment
- Geography with specialisation in Physical Geography
- Mechanical Design (Esbjerg)



*We also provide teaching to the Department of Architecture,
Design and Mediatechnology.*



Aalborg University's study form



Since Aalborg University was first established in 1974, all university programmes have been based on a unique model of teaching and learning: **the problem-based, project-organised model** also referred to as “PBL - The Aalborg model”. The latter has become both nationally and internationally recognised as an advanced and efficient learning model and it is a trademark for Aalborg University. Thus, **UNESCO** has placed its only *Danish Chair in PBL* at Aalborg University.

The PBL-Aalborg Model facilitates independent learning to achieve knowledge and skills at a high academic level. Our also have the possibility of working with the business community to solve real-life problems. The learning model also helps the students learn how to analyse problems, how to work result-oriented and finally how to do successful work in **teams**.

Through research in PBL, Aalborg University will continue to develop and adapt the PBL-model as a learning model for students as well as teaching staff, and ensure that the model responds well to the demands and changes posed by the surrounding society and changes in the educational system.

www.pbl.aau.dk

Key figures students I

- Students in all at AAU per 2012: 17,731
- Intake in all at AAU 2011 (bachelor level): 1461
- Number of students at the Faculty of Engineering and Science per 2011: 700
- Intake in all, 2011, at Civil Engineering: 98
- Number of students at Civil Engineering per 2012: 235 Aalborg, 80 Esbjerg, in all 315
- Number of international students per 2012: 31 Aalborg, 0 Esbjerg*
- Distribution, AAL-ESB:



**The international programmes in Esbjerg are offered from 2012.*



- Aalborg
- Esbjerg